

**MINUTES OF THE GENERAL MEETING OF THE
BOARD OF DIRECTORS OF THE
LOWER SAN JOAQUIN LEVEE DISTRICT
TUESDAY, MARCH 10, 2026**

Pursuant to the Call of the Chairman, a regular meeting of the Board of Directors of the Lower San Joaquin Levee District was held in the office of the San Luis Canal Company at 11704 W Henry Miller Avenue, Dos Palos, Merced County, California, on Tuesday, March 10, 2026, at the hour of 8:30 A.M.

CALL TO ORDER

Chairman Catania presided over the meeting and called it to order, with the following Directors present in the boardroom: George Park, Case Vlot, Breane Vandenberg, Steve Shehadey, and Bob Kelley. Director Sean Howard was absent. The following staff were present in the boardroom: Legal Counsel Lauren Layne, Secretary-Manager Shane Swartz, Superintendent Jody McClellon, and Office Administrator Raegan Huff. The guests in attendance in the boardroom were Sarah Woolf, Frank Cozzi, and Rob Tull.

CORRECTIONS OR ADDITIONS

S-M Swartz requested moving item #4 on the agenda to item #8 because the individuals giving the presentation were running late and were not present in the boardroom. Chairman Catania approved the adjustment to the agenda.

BOARD MINUTES

Following a discussion on the previous Board minutes and making minor grammar corrections, the minutes of the general meeting held on February 10, 2026, were approved as corrected, with a motion by Director Kelley and a second by Director Vlot.

PRESENTATION

Presentation briefing to the Board from Jacobs Engineering Group on the Regional Flood Management Planning (RFMP) – Lower San Joaquin Flood Control Project System Assessment

Rob Tull from Jacobs Engineering Group introduced himself to the Board and explained that he was there to discuss the Regional Flood Management Planning (RFMP). He presented the

Lower San Joaquin River Flood Control Project System Assessment. After the presentation, he invited the board members to ask any questions they might have.

LEGAL COUNSEL'S REPORT

Attorney Layne reported that there were no updates on legislation. She noted that a closed session would be held at the end of the meeting and recommended moving the Public Comment section to item 9 on the agenda. Chairman Catania approved the agenda adjustment as requested by legal counsel.

SUPERINTENDENT'S REPORT

Superintendent McClellon reported that the grading of the roadway has been completed for the season.

Superintendent McClellon reported that the cleaning and repairs of flap gates and corrugated metal pipes for the DWR Deferred Maintenance Project are still ongoing.

Superintendent McClellon reported that the spraying of levee slopes and the roadway is ongoing.

Superintendent McClellon stated that the vertebrate control program continues, utilizing bait stations and carbon monoxide machines.

Superintendent McClellon reported that fence and gate repairs continue as needed on the levee boundaries.

ACTION ITEM

District General Insurance 2026-27: Frank Cozzi, Broker, Stocking and Cozzi Insurance Agency

S-M Swartz introduced Frank Cozzi, who provided an update on the 2026-2027 District general insurance policy. He presented a brief overview to inform the Board members and address any questions they had. After discussion, on a motion by Director Park, and seconded by Director Vandenberg, the District's 2026-2027 general insurance policy proposed by Stocking and Cozi Insurance Company was accepted.

Resolution 744-26; Washington Bridge in Merced County CVFPB Encroachment Permit

S-M Swartz presented Resolution 744-26 to the Board for consideration. This resolution is for the emergency repairs to the Washington Road Bridge, over the Eastside Bypass, in Merced County. On a motion by Director Park, and seconded by Director Shehadey, the Resolution was adopted.

**LOWER SAN JOAQUIN LEVEE DISTRICT
DOS PALOS, CALIFORNIA**

RESOLUTION NO. 744-26

**RESOLUTION OF THE BOARD OF DIRECTORS
STATING NO OBJECTION TO THE WASHINGTON ROAD OVER
EASTSIDE BYPASS BRIDGE EMERGENCY RETROFIT PROJECT**

A. WHEREAS, the Board of Directors (the “Board”) of the Lower San Joaquin Levee District (the “District”) has read and reviewed the encroachment permit application submitted to the Central Valley Flood Protection Board (“CVFPB”) by the County of Merced (the “County”) for the Washington Road over Eastside Bypass Bridge Emergency Retrofit Project (the “Project”); and

B. WHEREAS, the Project is located approximately 4.5 miles southwest of El Nido in Merced County, California, and consists of the rehabilitation of the Washington Road Bridge (Bridge No. 39C0347) over the Eastside Bypass. **Exhibit “A”** shows the Project vicinity, **Exhibit “B”** shows the Project location, **Exhibit “C”** shows the Project components, and **Exhibit “D”** shows the Project preliminary design. **Exhibits “A,” “B,” “C,”** and **“D”** are attached hereto and incorporated by this reference; and

C. WHEREAS, the existing 705-foot-long bridge was constructed in 1965 and has experienced documented channel degradation and scour at Piers 9 through 17, resulting in significant pile exposure, settlement of the superstructure of up to approximately eight (8) inches, and differential settlement between adjacent piers; and

D. WHEREAS, the bridge was closed following the 2022-2023 winter storms after surveys confirmed that the remaining pile embedment was insufficient to safely support live loads; and

E. WHEREAS, the purpose of the Project is to return the bridge to its as-built condition, reinforce the failing supports, and to reopen the bridge to vehicular traffic; and

F. WHEREAS, the proposed Project will reinforce Piers 9 through 17 through construction of Cast-In-Place (CIP) Post-Tensioned (PT) superbents supported on 36-inch-diameter concrete columns founded on 60-inch-diameter Cast-In-Drilled-Hole (CIDH) concrete piles, to be constructed below and adjacent to the existing superstructure; and

G. WHEREAS, construction will include drilling Type II shafts adjacent to the existing columns, temporary support of the superstructure, removal of existing columns at Piers 9 through 17, lifting of the superstructure to its original as-built elevation, casting of new reinforced concrete bent caps, post-tensioning of the superbents, and removal of temporary supports; and

H. WHEREAS, the existing bridge deck will be treated with methacrylate to address cracking and extend the service life of the structure; and

I. WHEREAS, no work will occur on the existing levees or bridge abutments; and

J. WHEREAS, all work within the Eastside Bypass channel is proposed to occur during the dry season when there is no flowing water and minimal ponding; and

K. WHEREAS, construction equipment is anticipated to include excavators, drilling rigs, cranes, concrete trucks, pumps, and related equipment, and staging will occur within the existing roadway right-of-way and temporary construction easements; and

L. WHEREAS, no permanent right-of-way acquisition is required, though temporary construction easements are anticipated; and

M. WHEREAS, the bridge is currently closed and will remain closed during construction, with the existing 11.8-mile detour remaining in place until completion of the Project; and

N. WHEREAS, the Project is anticipated to be constructed within a single construction season of approximately 130 days during 2026; and

O. WHEREAS, the District's engineer has reviewed the Project information and has indicated that, provided the work is conducted as described and no work occurs on the levees or abutments, the Project is not anticipated to adversely impact the District's operation and maintenance of the flood control facilities; and

P. WHEREAS, this Board has reviewed the information presented.

NOW, THEREFORE, BE IT RESOLVED, the Board of Directors of the Lower San Joaquin Levee District, by this Resolution, does hereby not object to the aforementioned Project application, but does hereby require the following conditions:

1. Applicant agrees to indemnify and hold the District harmless from any and all liability arising out of the proposed construction activities and the subsequent operation, maintenance, or use of the bridge and associated improvements.

2. Applicant acknowledges and recognizes that the District must maintain a functioning flood control system for the passage of flood waters and agrees that construction activities, access, staging, and future maintenance shall not interfere with the District's ability to operate, inspect, maintain, or repair the Eastside Bypass and associated facilities.

3. No work shall occur on existing levees or abutments without prior written approval from the District and the appropriate regulatory agencies.

4. All in-channel work shall occur during the dry season and in accordance with all applicable permits and environmental restrictions.

5. Upon completion of construction, any disturbed District facilities, access roads, or adjacent areas shall be restored to equal or better condition to the satisfaction of the District.

6. Applicant shall coordinate with District personnel prior to commencement of construction and shall provide appropriate contact information and coordinate access with the District throughout the duration of the Project.

BE IT FURTHER RESOLVED, if the above-stated conditions are included in the Central Valley Flood Protection Board's decision, then the District does not object to the Application.

BE IT FURTHER RESOLVED, notification of this action will be transmitted to the Central Valley Flood Protection Board and the County of Merced, as the applicant.

APPROVED AND ADOPTED by the Board of Directors of the Lower San Joaquin Levee District on the 10 day of MARCH, 2026, by the following vote:

AYES:	<u>6</u>
NAYS:	<u>0</u>
ABSTAIN:	<u>0</u>
ABSENT:	<u>1</u>



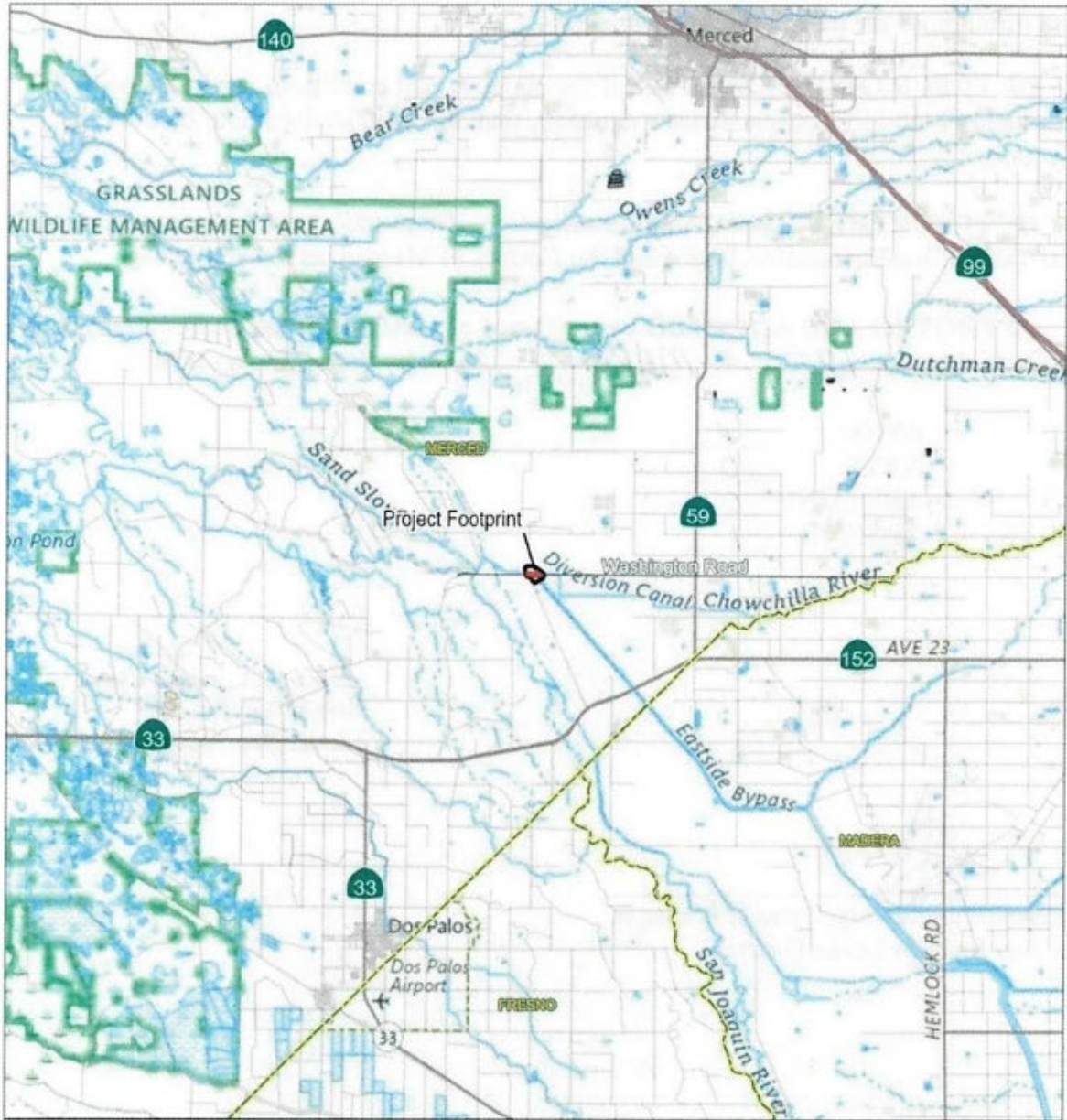
Roy Catania, Chair
Lower San Joaquin Levee District

Attest:



Shane Swartz, Secretary-General Manager
Lower San Joaquin Levee District

Exhibit "A" Project Vicinity



WASHINGTON ROAD OVER EASTSIDE BYPASS BRIDGE REPLACEMENT PROJECT, MERCED COUNTY, CALIFORNIA

<p>Statewide Location</p> <p style="text-align: center;">Regional Location</p>	<p>Regional Location</p> <p style="text-align: center;">Detail Area</p>	<ul style="list-style-type: none"> Project Footprint (6.64 acres) Biological Study Area (BSA) (79.87 acres) County Boundary <div style="display: flex; align-items: center; margin-top: 10px;"> <div style="text-align: center; margin-right: 10px;"> </div> <div style="text-align: center; margin-right: 10px;"> </div> <div style="text-align: center;"> </div> </div> <p style="font-size: small; margin-top: 5px;"> Data Source: - ESRI Basemaps National Geographic World Map accessed 2025 - Area West Environmental, Inc. 2025 </p>
---	--	--

Y:\AWES\017 Washington Rd Eastside Bypass\AK Proj\Project\BSA\figs\25-017 Figure 1 - Proj Vicinity.aprx

Exhibit "B" Project Location

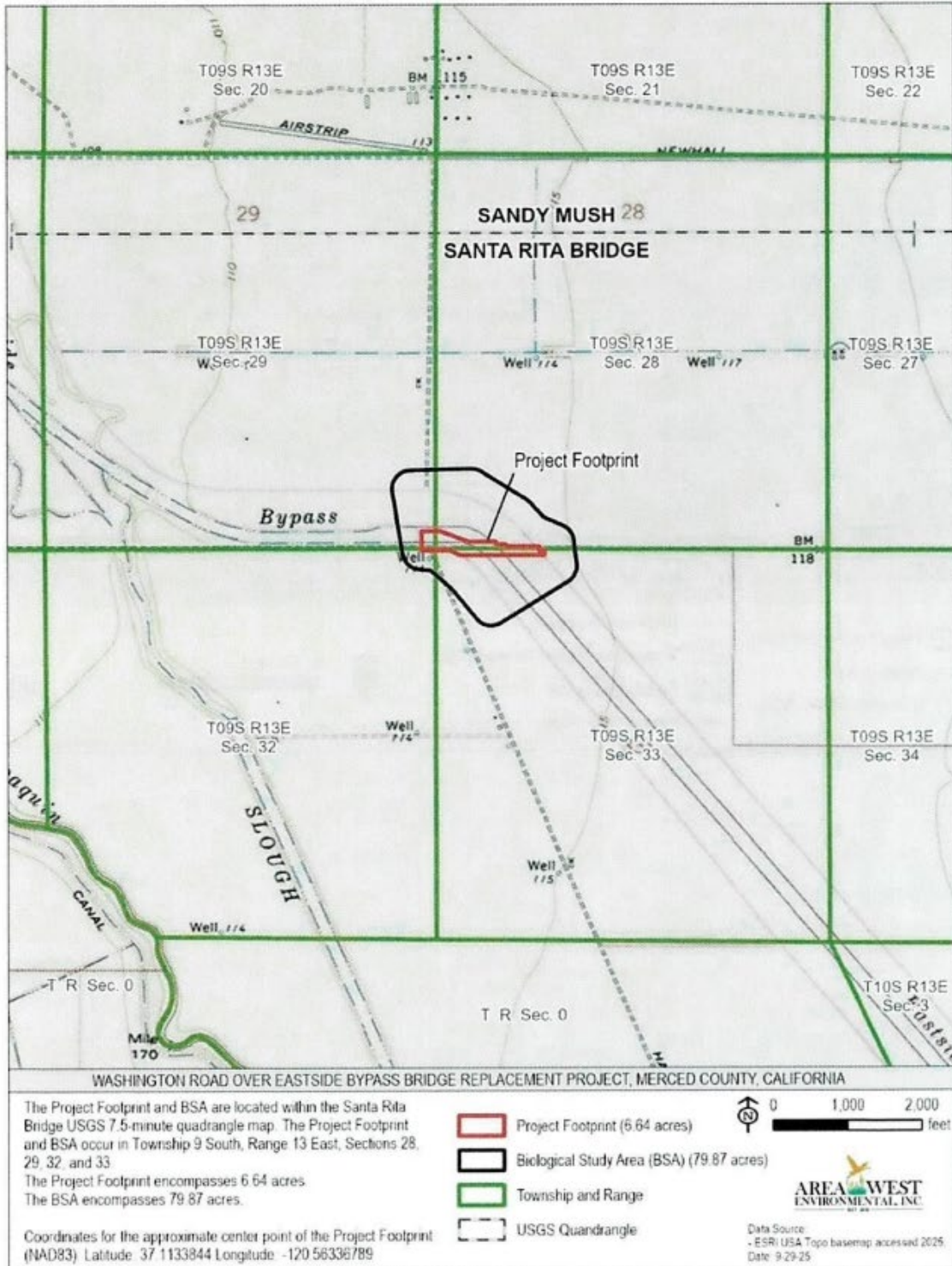


Exhibit "C" Project Components

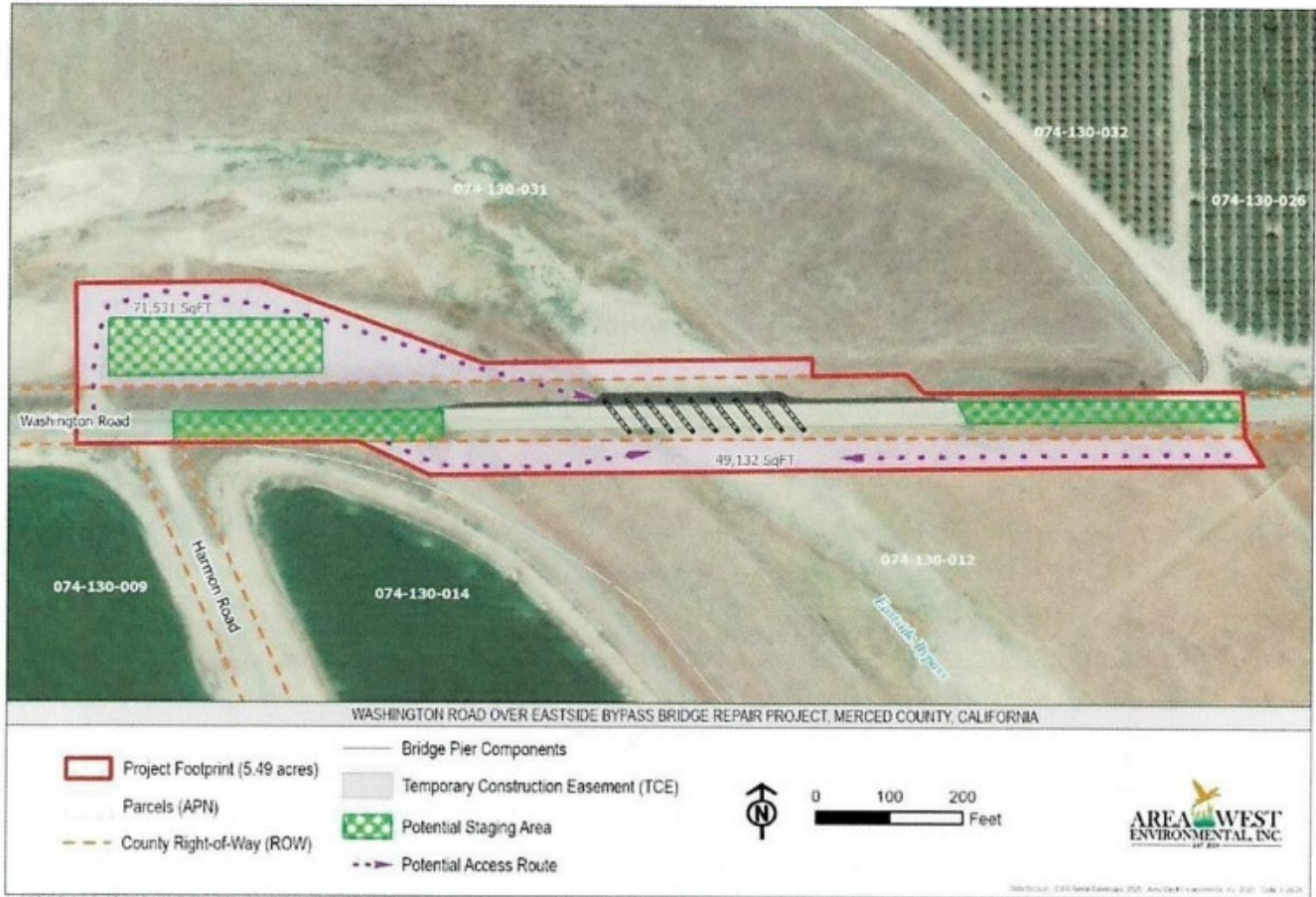
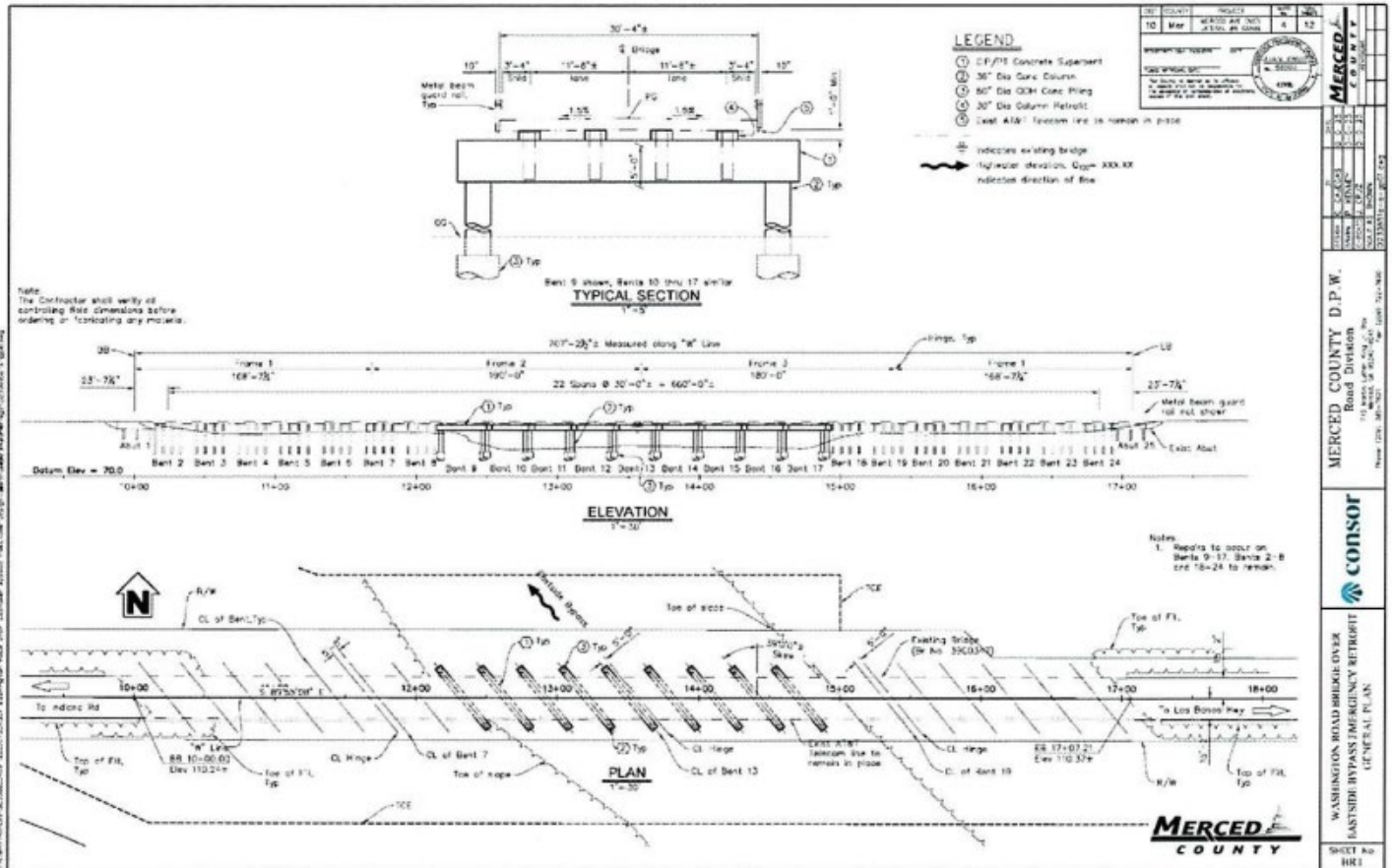


Exhibit "D"

Project Preliminary Design



SECRETARY-MANAGER'S REPORT

S-M Swartz presented current updates on flood operations and Friant Dam flows.

S-M Swartz stated that the Aliso Water District recharge project is approximately 90% completed in the Chowchilla Canal Bypass.

S-M Swartz mentioned that two other GSA projects are ongoing within the District: one on Road 4 and another on Avenue 21 in Madera County.

S-M Swartz reported that Madera County Public Roads contacted him to inform him that the 18½ bridge will be completely replaced. Madera County is receiving state funding to complete this project and is currently collaborating with Caltrans to develop a feasibility study. The project is expected to be completed within 2 to 3 years.

S-M Swartz stated that the Madera County Flood District is completing a gravel project on Road 9.

S-M Swartz informed the Board that Grasslands State Parks has requested access to the State Flood Control levee located in Stevinson, to use for access to the San Joaquin River. The District holds an easement over private property for its use to access the State Flood Control levee. S-M Swartz indicated that he would contact the landowners to determine whether they would permit access.

DWR – Deferred Maintenance Program (DMP) Update

S-M Swartz provided an update on DWR's Deferred Maintenance Program. The District is awaiting the completion of the finalized package from DWR for the next phase of pipe replacements.

DWR – Flood System Repair Program (FSRP) Update

S-M Swartz provided an update on DWR's Flood System Repair Program. S-M Swartz mentioned he is collaborating with Summers Engineering to finalize the FSRP gravel project reports and submit them to DWR. He will share the finalized report with the Board once it is completed. S-M Swartz mentioned that the FSRP Erosion project is ongoing. They are still working on the permit process and hope to start construction in the Fall of 2026.

BUDGET STATUS REPORT

Following a discussion of the claims presented, on a motion by Director Vlot, and seconded by Director Vandenberg, the following claims were unanimously acknowledged and approved for payment.

Anthem Blue Cross	Employee Group Insurance	10300	\$12,357.94
Baker Manock & Jensen	Professional services	21800	\$3,212.98
Baker Supplies & Repairs	Maintenance- equipment, other	21200	\$38.63
CAL NET	Communications	20600	\$78.20
Cool World Enterprises	Communications	20600	\$337.00
CoPower	Employee Group insurance	10300	\$87.40
Company Credit Card (Shane)	Amazon, ParcelQuest		\$2,257.51
Company Credit Card (Jody)	Pesticide License, Maint. equip.		\$445.63
Drugtech Toxicology	Professional services	21800	\$44.00
Garton Tractor	Maintenance- equipment, other	21200	\$208.88
George W. Lowry, Inc.	Maintenance- structures, other	21300	\$385.00
Gilton Waste	Household expense-supplies	20900	\$177.50
Henry Miller Rec. (Rent)	Office expenses/supplies	21700	\$1,537.00
Henry Miller Rec. (Propane)	Office expenses/supplies	21700	\$135.53
Holt of CA	Maintenance- equipment, other	21200	\$300.17
Holt of CA	FSRP Expense	22388	\$6,241.08
Humana	Employee Group Insurance	10300	\$439.13
Joregensen Company	Maintenance- structures, other	21300	\$715.99
Kellogg Supply	Maintenance- equipment, other	21200	\$304.09
Kimball Midwest	Maintenance- equipment, other	21200	\$91.93
Los Banos Valley Wide	FSRP Expense	22388	\$17,905.94
Marfab Ag	Small tools and instuments	22200	\$128.07
Merced Truck & Trailer	Maintenance- equipment, other	21200	\$229.36
Muncipal Treatment Equipment	DMP Expense	22389	\$121,787.68
Napa Auto Parts	Maintenance- equipment, other	21200	\$432.89
PG&E (Protection)	Utilities	22600	\$14.76
PG&E(Structures)	Utilities	22600	\$285.74
PG&E(LD Office)	Utilities	22600	\$77.64
PG&E(LD Shop)	Utilies	22600	\$437.76
Provost & Pritchard	Professional services	21810	\$768.50
Primo Brands (LD Office)	Household expense-supplies	20900	\$44.95
Primo Brands (Shop)	Household expense-supplies	20900	\$103.33
Ross Ketcham Fence	FSRP Expense	22388	\$47,147.75
Santos Ford	Maintenance- equipment, other	21200	\$4,717.98
San Joaquin Sand & Gravel	FSRP Expense	22388	\$449,478.16
Safe-T-Lite	Maintenance- equipment, other	21200	\$409.36
Summers Engineering, Inc.	FSRP Expense- Gravel	22388	\$2,662.70
Summers Engineering, Inc.	DMP Expense	22389	\$1,038.10
Tharp's Farm Supply	Maintenance- equipment, other	21200	\$263.78
UniFirst	Clothing & Personal Supply	20500	\$521.20
Verizon Connect	Communications	20600	\$273.20
Verizon	Communications	20600	\$176.81
Windecker	Transportation and Travel	22500	\$8,321.03
Wood Bros., Inc.	DMP Expense	22389	\$18,717.50
Zenith	Workmen's Cop. Insurance	10360	\$2,848.00

PUBLIC COMMENT

No public comment.

CLOSED SESSION

Chairman Catania dismissed the public, and Attorney Layne opened the closed session at 9:15 A.M. The Board came out of closed session at 9:39 A.M. with no reportable action.

ADJOURNMENT

There being no further business, Chairman Catania declared the meeting adjourned at 10:05 A.M.



Shane Swartz, Secretary-Manager